

JUNGLE^{4x4}	FITTING INSTRUCTIONS
PRODUCT NAME:	FRONT BULLBAR
MODEL NAME:	DELUXE BAR, SPORTS BAR
CAR MODEL:	FORD RANGER 2022

NOTE

- This product must be installed as per the instructions given below using the components supplied.
- This product must be used for specified vehicle make and model.
- All product labels should be kept untouched/not tampered with.
- This product must not be modified until otherwise mentioned/suggested.
- Professional installation of this product is recommended and requires professional tools.
- The installer should check for component clearances before finalising the installation of the product.
- Bolts/nuts fastened to specified torque unless otherwise instructed.

Torque settings for fasteners

SIZE	TORQUE (Nm)	TORQUE (lbft)
M5	5	4
M6	9	7
M8	22	16
M10	44	32
M12	77	57

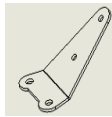
Tools Required

Basic tool kit	Temporary marker pens
Plastic trim cutting tool/blade	Torque wrench
Tape measure	Drill with full metric drill set
Masking tape	18mm solid block



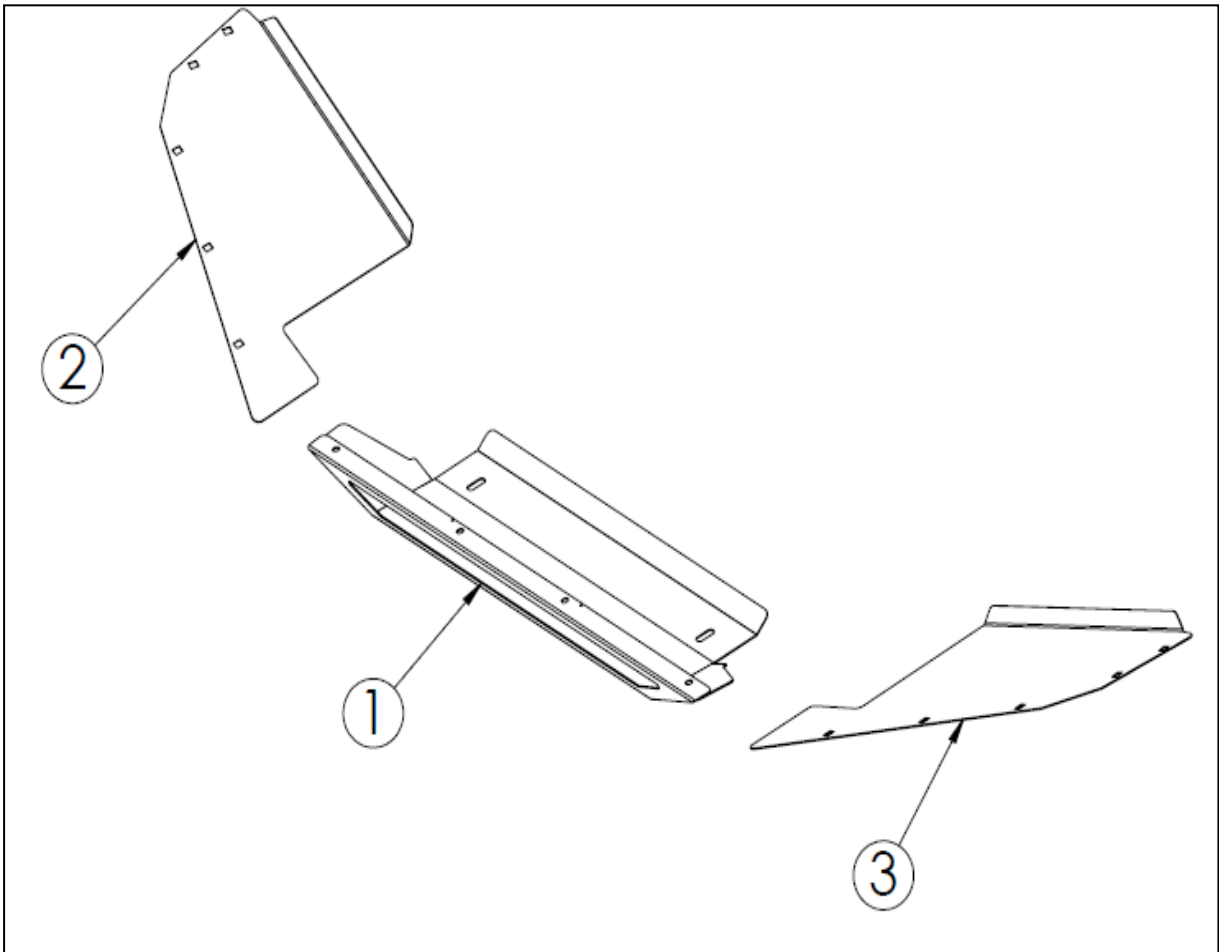
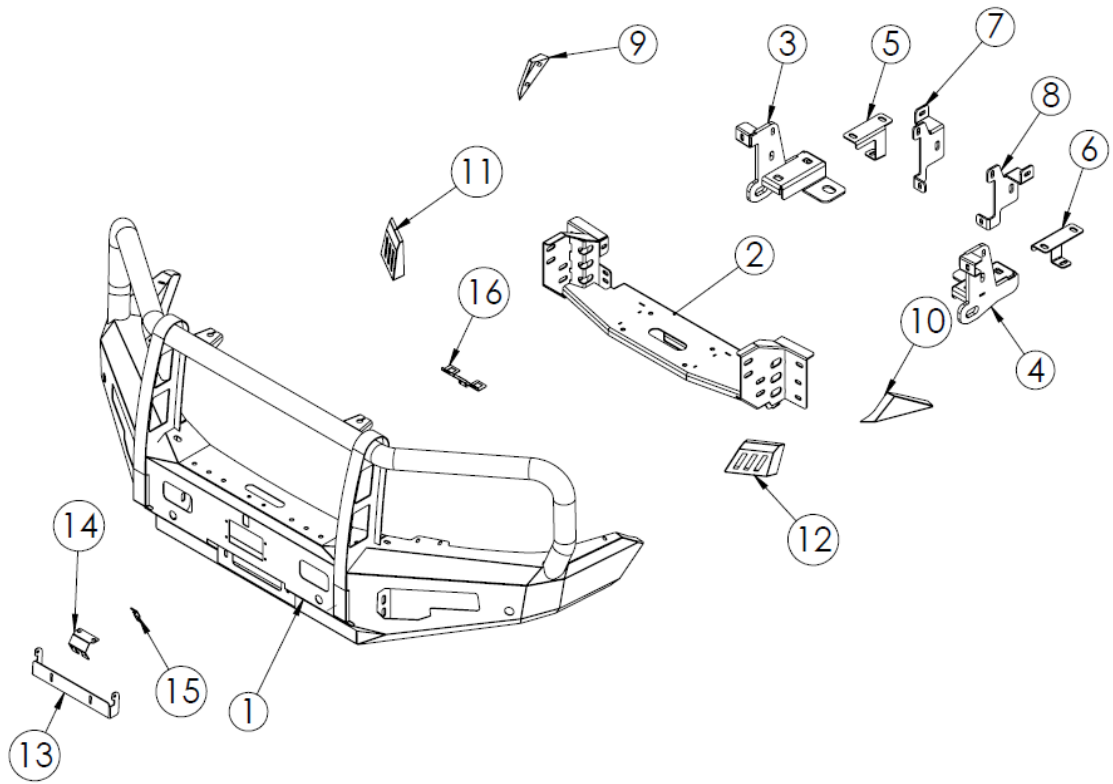
Part List		
No.	Description	Qty
1	Bull Bar	1
2	Winch Frame	1
3	Recovery Point RH	1
4	Recovery Point LH	1
5	Mounting Guard RH	1
6	Mounting Guard LH	1
7	Support Chassis Mounting RH	1
8	Support Chassis Mounting LH	1
9	Outer Infill RH	1
10	Outer Infill LH	1
11	Inner Infill RH	1
12	Inner Infill LH	1
13	License Plate	1
14	Camera Bracket	1
15	Camera Clamp	1
16	Centre Grille Bracket	1
N/A	Housing Sensor	6
N/A	Radar Cover Panel (Fit on Bar)	1

Control Winch Plate



No.	Description	Qty
N/A	M6 x 1.0 x 25 Hex Bolt	2
N/A	M6 x 1.0 Flange Nut	4

Bolt Kit		
No.	Description	Qty
N/A	M6 x 1.0 x 20 Button Head Bolt	17
N/A	M6 x 1.0 x 15 Hex Bolt	1
N/A	M6 x 1.0 Flange Nut	8
N/A	M6 x 1.0 Nyloc Nut	2
N/A	M6 x 1.0 Cage Nut (2T)	8
N/A	M6 x Ø18mm Flat Washer (Black)	2
N/A	M6 x Ø18mm Flat Washer	22
N/A	M8 x 1.25 x 30 Hex Bolt	10
N/A	M8 x 1.25 Nyloc Nut	2
N/A	M8 Spring Washer	8
N/A	M8 x Ø24mm Flat Washer	12
N/A	M10 x 1.25 x 35 Hex Bolt	8
N/A	M10 x 1.25 x 35 Plate Bolt	4
N/A	M10 x 1.25 Nyloc Nut	12
N/A	M10 x Ø28mm Flat Washer	20
N/A	M12 x 1.25 x 35 Hex Bolt	8
N/A	M12 x 1.25 Nyloc Nut	8
N/A	M12 x Ø32mm Flat Washer	16
N/A	M6 x 1.0 Rivet Nut (Fit on Bar)	4
N/A	M6x1.0x20 Button Head Bolt (Fit on Bar)	4
N/A	M6x1.0 Flange Nut (Fit on Bar)	4





1

- Check car for damages and record if any.



2

- Undo the indicated scrivets and take off the top radiator shroud and retain it.



3



4

- ❑ Undo vertical screws in the wheel arch connecting fender and flare and retain.



5

- ❑ Undo indicated bolts connecting bumper and fender guard and retain.



6

- ❑ Undo indicated bolt and gently remove grill and retain.



7

- Unplug sensors and fog lights.
- Undo and plug camera washer fluid pipe (as indicated).



8

- Undo camera-plug (as indicated)



9

- Undo and discard license plate holder.



10

- Frontal view after grill removal.



11

- Undo lower bumper bracket and discard.



12

- Using a masking tape. Mask the flares along the indicated line and remove the flares.
- Make a cut along the masked line.



12

- Undo the indicated bolt (both LHS and RHS) and retain.
- Take off bumper and keep it on a clear surface.



13

- Frontal view after bumper and grill removal.

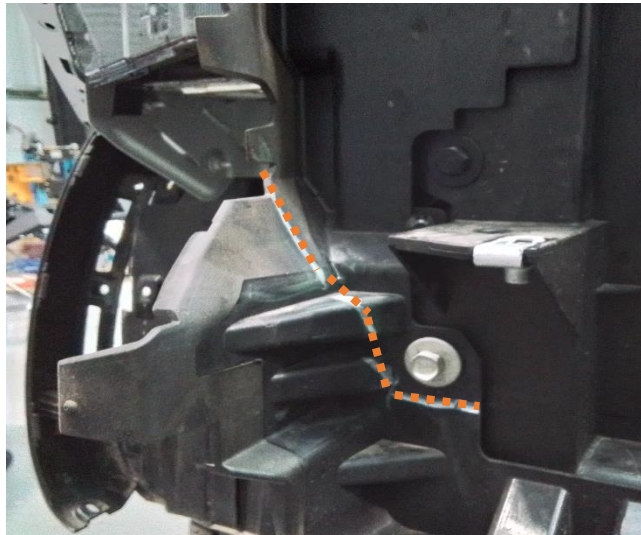


14

- Carefully unplug and remove sonar from the indicated location.



15



16

- Undo chassis cross-member and discard it.
- Undo air-dam component and make a cut as indicated.
- Put back the trimmed part using O.E. bolts.



- Undo and discard lower bumper support bracket.



18

- Relocate horn to one of the bumper support bracket mount.



19

- Undo underbody protection and retain it.



20

- Undo and discard stock recovery point.



21

M6x1.0x15 Hex Bolt

M6x1.0 Flange Nut



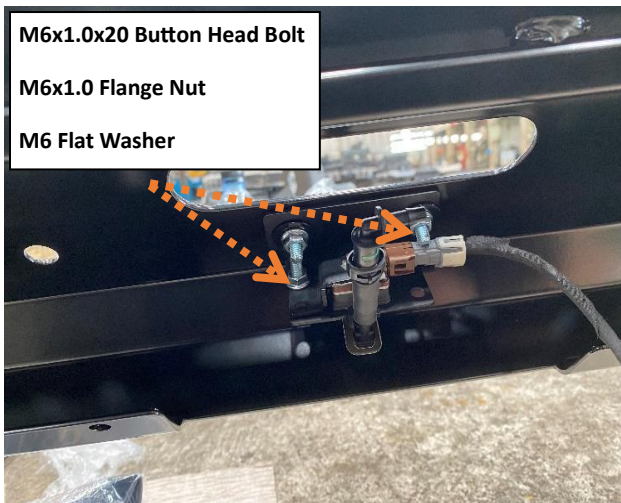
22

- Unplug and unclip front camera from the grill.
- Relocate camera using the provided camera clamp and bracket with the fitting kit (fig:22).
- Remember to affix back the camera washer pipe.

M6x1.0x20 Button Head Bolt

M6x1.0 Flange Nut

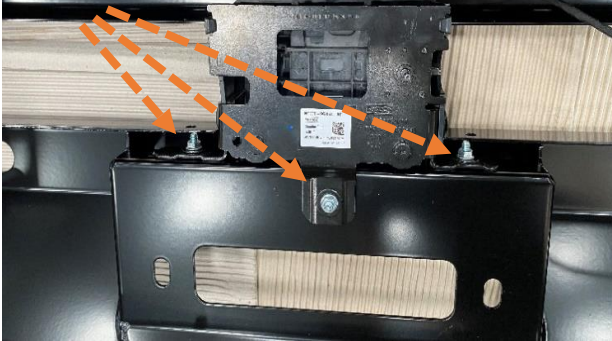
M6 Flat Washer



23

- Affix the camera assembly (previous step) to the bullbar.
- Camera setup???

M6x1.0x20 Button Head Bolt
M6x1.0 Flange Nut
M6 Flat Washer



24

- ❑ Relocate sonar/radar to the bullbar using the provided bolts in the fitting kit.

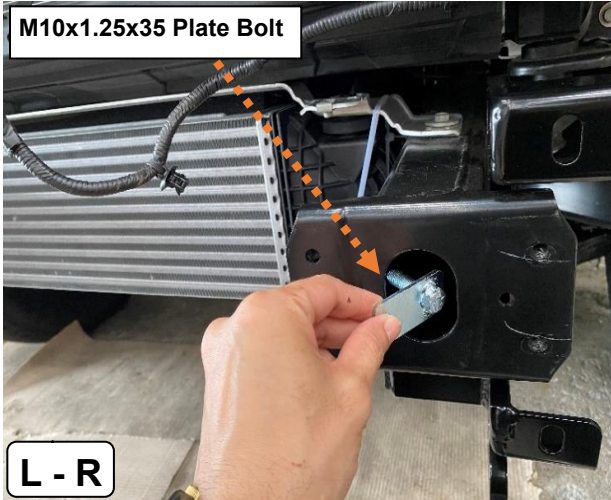


25

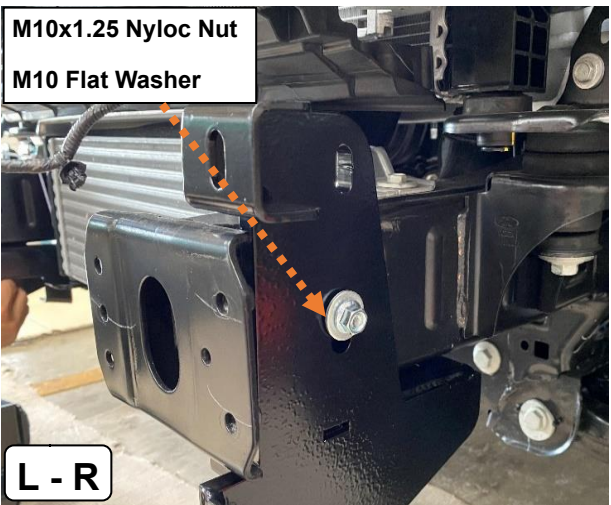
- ❑ Unclip and relocate all the sensors in the bumper to the bullbar using sensor housings provided in the fitting kit.



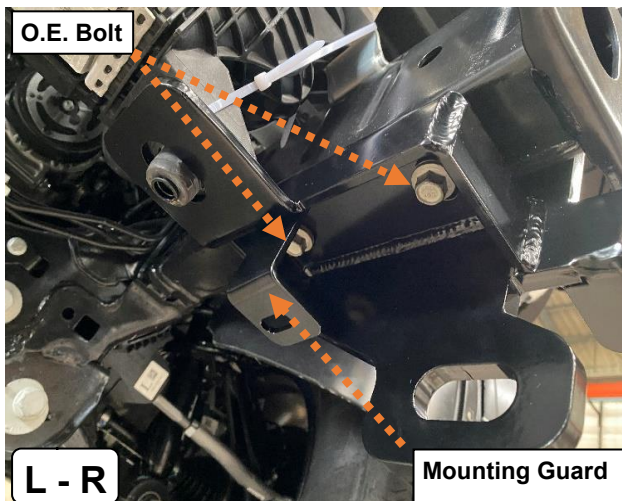
26



27



28

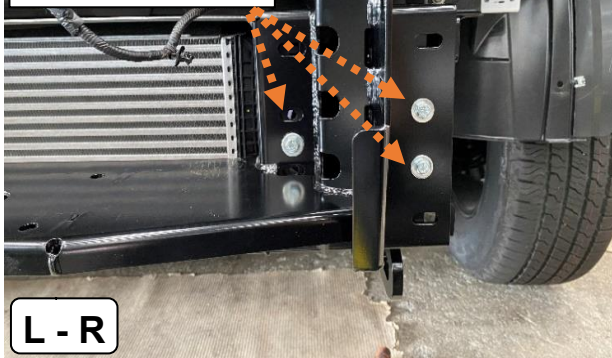


29

- ❑ Using the M10 x 1.25 x 35 plate bolt provided in the bolt kit, mount the recovery points to the side of the chassis.

- ❑ Use the O.E. bolts to mount the same recovery points to the bottom of the chassis and the guard mounting.

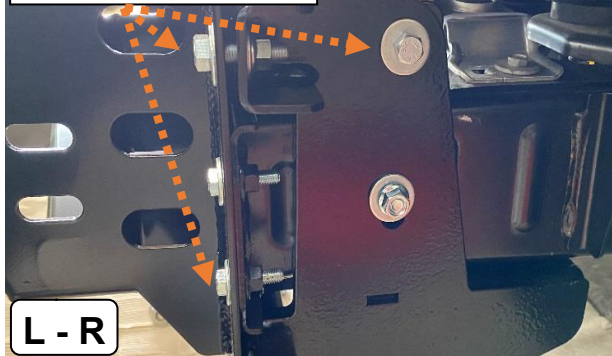
M8x1.25x30 Hex Bolt
M8 Spring Washer
M8 Flat Washer



30

- Mount winch cradle to the chassis using the supplied bolt kit.
- Remember not to fasten the bolts fully to allow for symmetry adjustment.

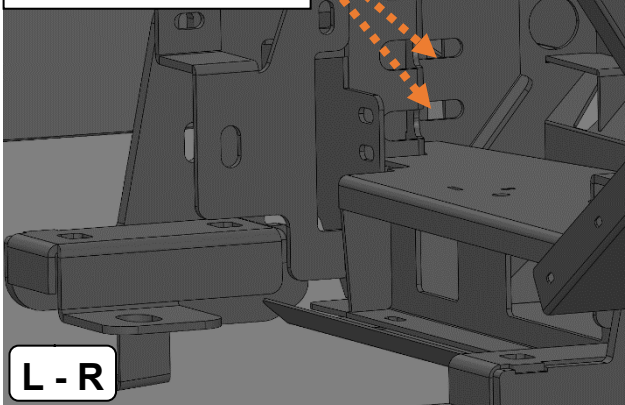
M10x1.25x35 Hex Bolt
M10x1.25 Nyloc Nut
M10 Flat Washer



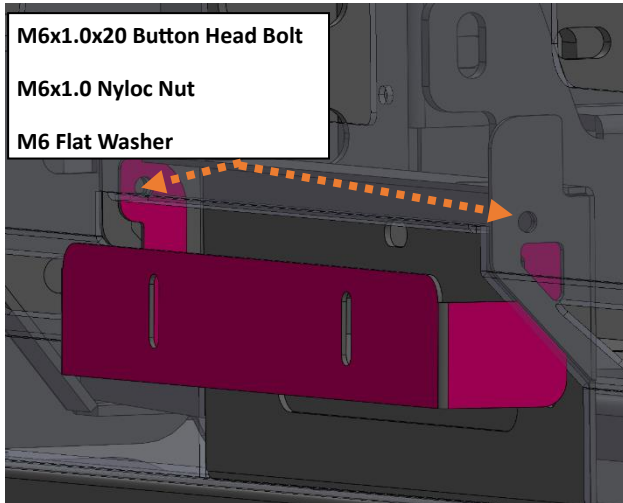
31

- Connect recovery point to the winch cradle using supplied bolts.
- Centre the cradle before further installation and fasten all the bolts.
- Put back the grill on the car using OE scrivenets and bolts.

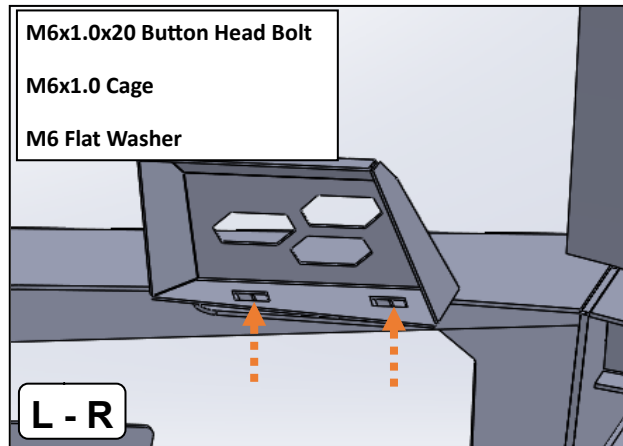
M10x1.25x35 Hex Bolt
M10x1.25 Nyloc Nut
M10 Flat Washer



- Mount bullbar to the winch cradle using the provided bolt kit.
- Don't fasten until it is centred to the car.

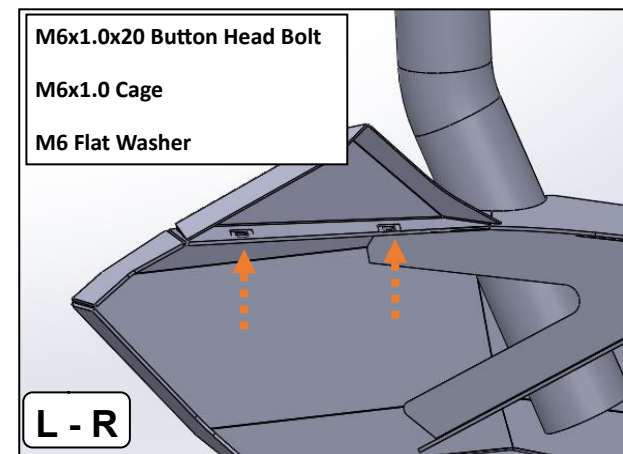


- Mount license plate bracket.



36

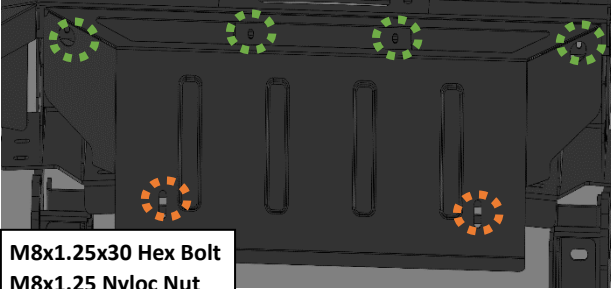
- Install headlight infills and check for clearances between headlight and grill.



37

- Install wing infills and check for clearances between headlight & fender.

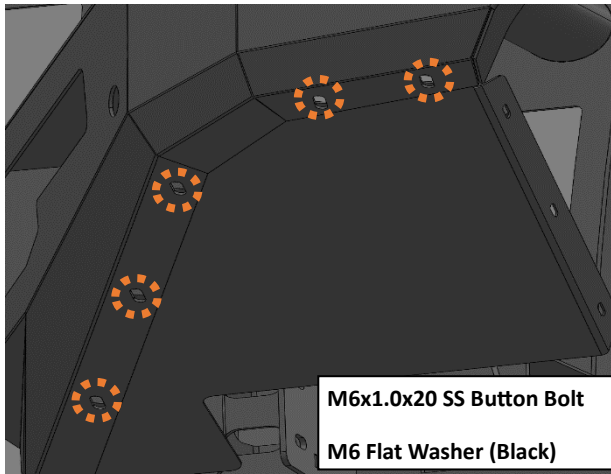
M6x1.0x20 SS Button Bolt
M6 Flat Washer (Black)



M8x1.25x30 Hex Bolt
M8x1.25 Nyloc Nut
M8 Flat washer

38

- Install centre underbody guard using M6 (in green) and M8 (in orange) bolts respectively.



M6x1.0x20 SS Button Bolt
M6 Flat Washer (Black)

39

- Install wing guards and check for any flopping between guards and arch liner.



Disclaimer:

- For optimal fitting there should be an 18 mm gap between the bullbar and fender and parallel to the fender line.
- Further fitment is at the installer's own discretion.