

JUNGLE^{4x4}	FITTING INSTRUCTIONS
PRODUCT NAME:	FRONT BULLBAR
MODEL NAME:	DELUXE BAR, SPORTS BAR
CAR MODEL:	FORD RANGER PX1

NOTE

- This product must be installed as per the instructions given below using the components supplied.
- This product must be used for specified vehicle make and model.
- All product labels should be kept untouched/not tampered with.
- This product must not be modified until otherwise mentioned/suggested.
- Professional installation of this product is recommended and requires professional tools.
- The installer should check for component clearances before finalising the installation of the product.
- Bolts/nuts fastened to specified torque unless otherwise instructed.

Torque settings for fasteners

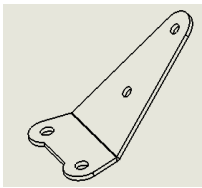
SIZE	TORQUE (Nm)	TORQUE (lbft)
M5	5	4
M6	9	7
M8	22	16
M10	44	32
M12	77	57

Tools Required

Basic tool kit	Temporary marker pens
Plastic trim cutting tool/blade	Torque wrench
Tape measure	Drill with full metric drill set
Masking tape	18mm solid block

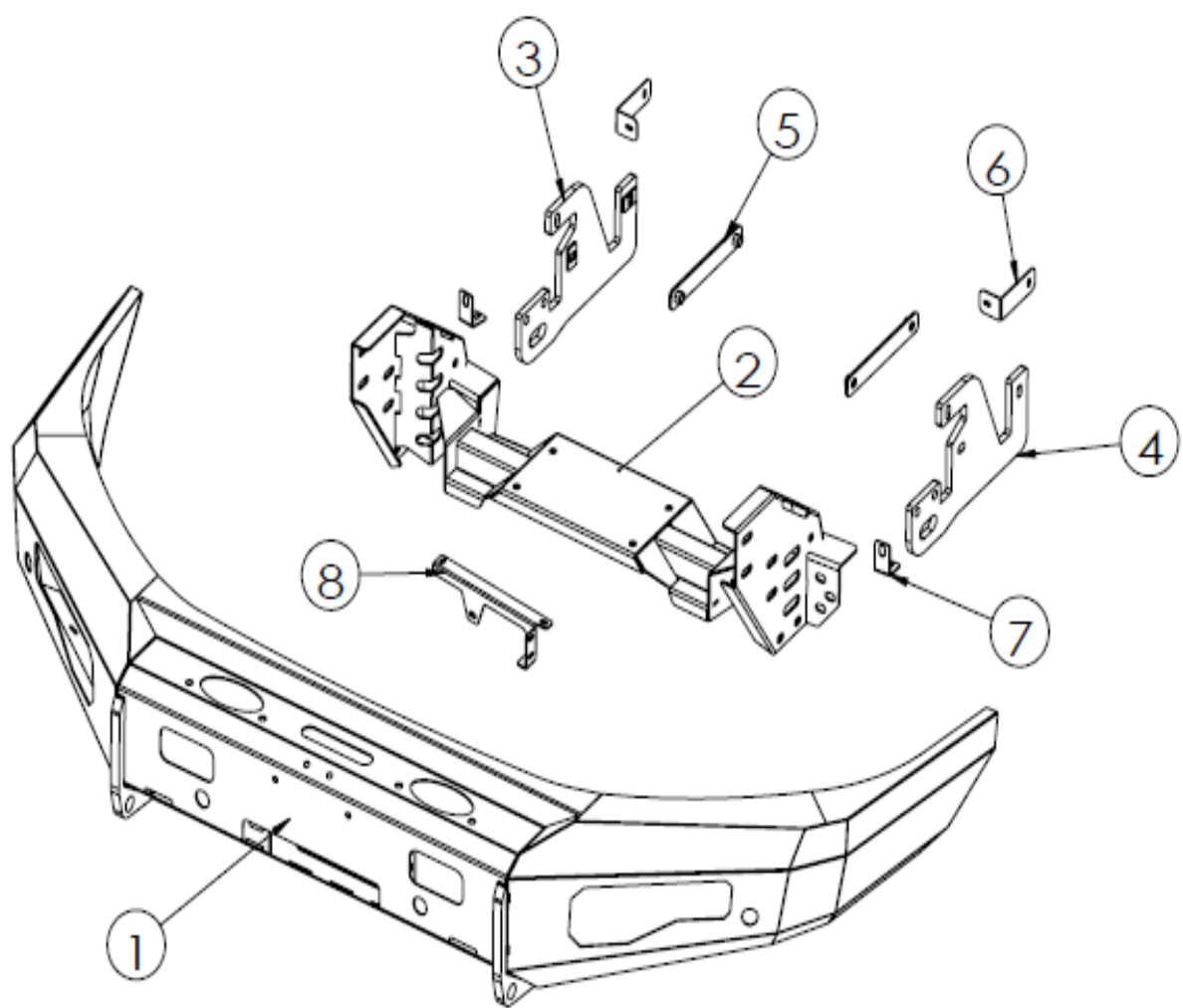


Part List		
No.	Description	Qty
1	Bull Bar Ford Ranger 2015	1
2	Bar Mount	1
3	Recovery Point RH	1
4	Recovery Point LH	1
5	M12 x 1.25 Plate Nut	2
6	Bracket for Plastic Bumper	2
7	Bracket Wing Guard	2
8	Bracket Sona Sensor	1
9	Sensor Plug 29mm	4

Control Winch Plate		
		
No.	Description	Qty
N/A	M6 x 1.0 x 25 Hex Bolt	2
N/A	M6 x 1.0 Flange Nut	4
N/A	M6 x Ø12.5 mm Flat Washer	6

Bolt Kit for License Plate		
No.	Description	Qty
N/A	M6 x 1.0 x 25 Hex Bolt	4
N/A	M6 x 1.0 Flange Nut	2
N/A	M6 x Ø12.5 mm Flat Washer	6

Bolt Kit		
No.	Description	Qty
N/A	M6 x 1.0 x 25 Hex Bolt	9
N/A	M6 x 1.0 Flange Nut	9
N/A	M6 x Ø19mm Flat Washer	18
N/A	M10 x 1.25 x 100 Hex Bolt	2
N/A	M10 x 1.5 x 35 Hex Bolt	4
N/A	M10 x 1.25 x 35 Hex Bolt	20
N/A	M10 x 1.25 Nyloc Nut	22
N/A	M10 x Ø28mm Flat Washer	48
N/A	M12 x 1.25 x 100 Hex Bolt	4
N/A	M12 x Ø32mm Flat Washer	4
N/A	M12 Spring Washer	4
N/A	Bumper Trim Template LH	1
N/A	Bumper Trim Template RH	1

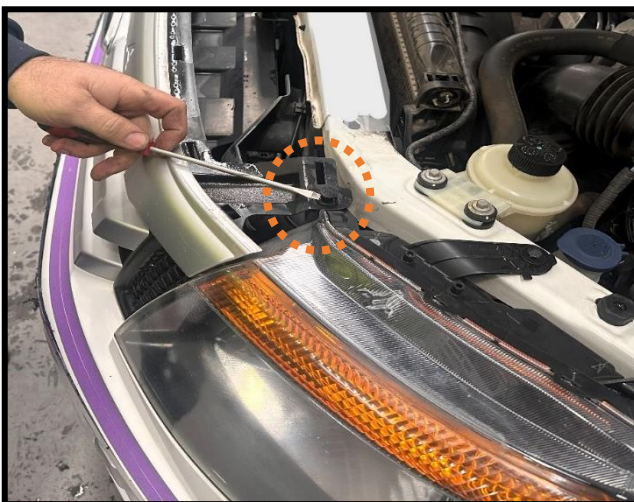




- Check car for damages and record if any.



- Undo the indicated scrivets and take off the top radiator shroud and retain it.



- Undo indicated upper grill scrivet and retain.



- ❑ Using a masking tape, mark along the lower bumper curve line as indicated.

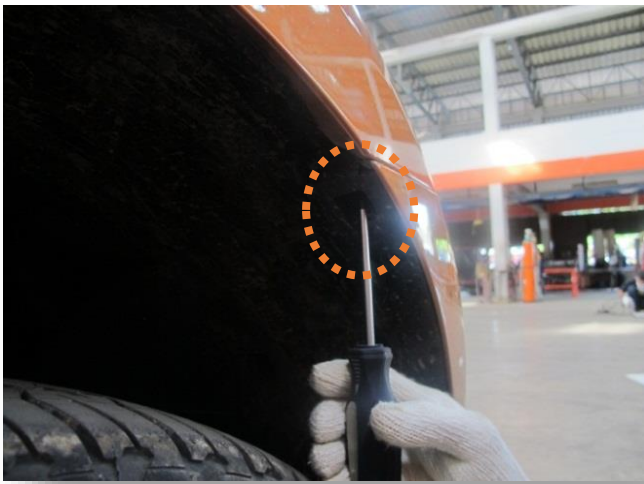


- ❑ On the side, using the dimensions given in the picture (baseline as indicated) mark along and connect it with the previous marking.



7

- Undo the indicated bolt located behind radiator grill and retain it.



8

- Undo vertical screws in the wheel arch and retain.
- Gently take off the bumper and grill.



9

- Measure 10 mm from the indicated marking on the upper bumper-headlight support bracket and mark it using a masking tape.
- Carefully remove and make a cut and put back the remaining part.



- ❑ Using a masking tape, mark along the indicated line on the air-dam component.
- ❑ Gently remove and make a cut and place back the remaining part.



- ❑ Relocate temperature sensors to the horn bracket.



- Remove and discard all the indicated bumper support brackets and air dam components.



- Undo chassis cross member and discard it.



- Undo underbody protection plate and retain it.



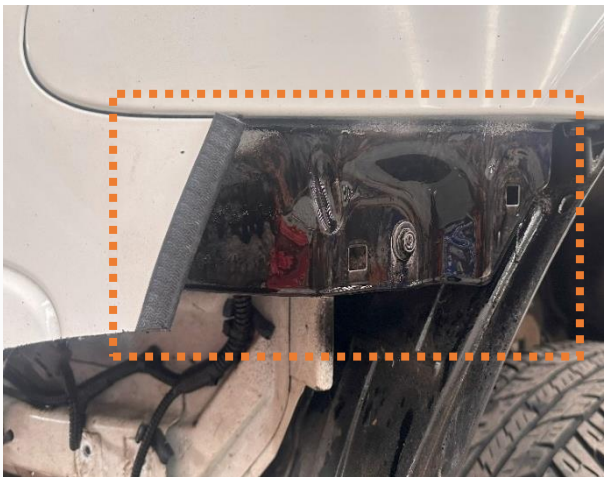
- Undo and discard air-deflector component.



- Frontal view after removal of components.

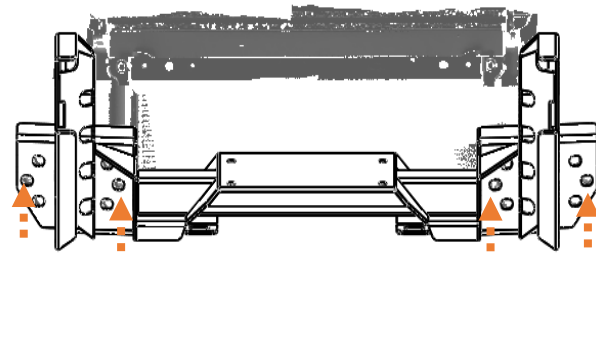


- ❑ Using a trim cutting tool. Cut along the masked lines on the bumper in the previous steps.
- ❑ Install the trimmed bumper and grill back on the car.



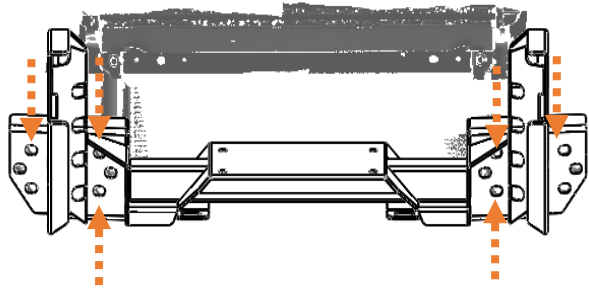
- ❑ Cut a 70 mm trim and install it on the edge of the trimmed bumper.
- ❑ Spray paint the exposed car frame as indicated.

M10 x 1.5 x 35 Hex Bolt
M10 Flat Washer



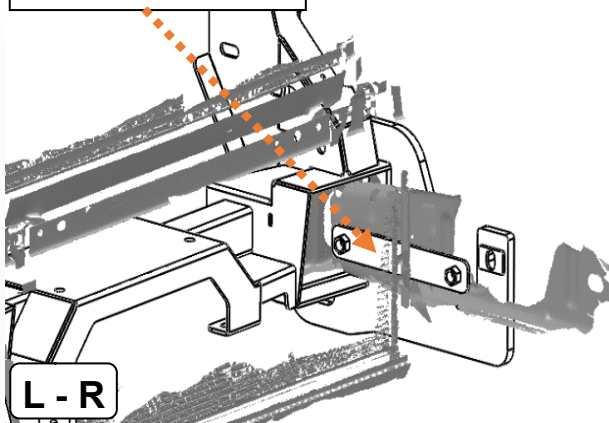
- ❑ Mount winch cradle to the chassis mount using the provided bolt kit.

M10 x 1.25 x 35 Hex Bolt
M10 Flat Washer
M10 Nyloc Nut



- Mount winch cradle to the chassis mount using the provided bolt kit.

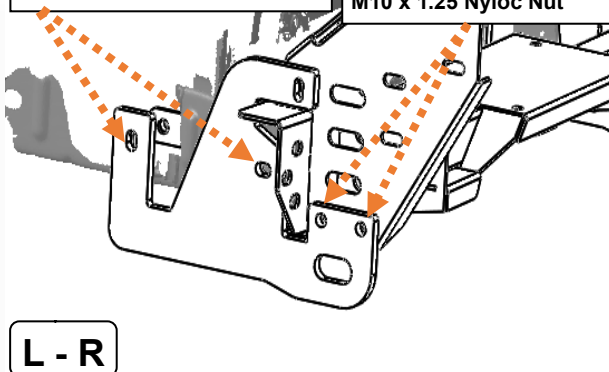
Plate Nut M12 x 1.25



- Install plate nut provided in the fitting kit.

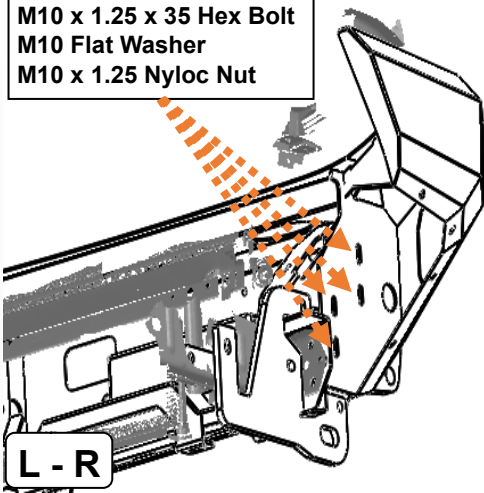
M12 x 1.25 x 100 Hex Bolt
M12 Flat Washer

M10 x 1.25 x 35 Hex Bolt
M10 Flat Washer
M10 x 1.25 Nyloc Nut



- Mount recovery point provided in the fitting kit.

M10 x 1.25 x 35 Hex Bolt
M10 Flat Washer
M10 x 1.25 Nyloc Nut



- Mount bulbar to the winch cradle.



- For optimal fitment keep a 18 mm gap between the bulbar and fender profile.

Disclaimer:

- For optimal fitting there should be an 18 mm gap between the bullbar and fender and parallel to the fender line.
- Further fitment is at the installer's own discretion.