

JUNGLE^{4x4}	FITTING INSTRUCTIONS
PRODUCT NAME:	FRONT BULLBAR
MODEL NAME:	DELUXE BAR, SPORTS BAR
CAR MODEL:	HOLDEN COLORADO 2017

NOTE

- This product must be installed as per the instructions given below using the components supplied.
- This product must be used for specified vehicle make and model.
- All product labels should be kept untouched/not tampered with.
- This product must not be modified until otherwise mentioned/suggested.
- Professional installation of this product is recommended and requires professional tools.
- The installer should check for component clearances before finalising the installation of the product.
- Bolts/nuts fastened to specified torque unless otherwise instructed.

Torque settings for fasteners

SIZE	TORQUE (Nm)	TORQUE (lbft)
M5	5	4
M6	9	7
M8	22	16
M10	44	32
M12	77	57

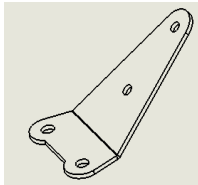
Tools Required

Basic tool kit	Temporary marker pens
Plastic trim cutting tool/blade	Torque wrench
Tape measure	Drill with full metric drill set
Masking tape	18mm solid block



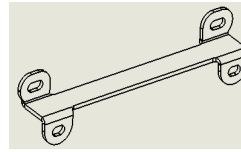
Part List		
No.	Description	Qty
1	Bull Bar Chevy Colorado 2017	1
2	Bar Mount	1
3	Recovery Point RH	1
4	Recovery Point LH	1
5	Support Mounting RH	1
6	Support Mounting LH	1
7	Bracket Wheel Liner	2
8	Tube Spacer \varnothing 14mm x 50 mm	2
9	Bracket Wing Guard	2
10	Support Bracket 8 mm	2
N/A	Sensor Hole Plugs 25 mm (Fit on Bar)	4

Control Winch Plate



No.	Description	Qty
N/A	M6 x 1.0 x 25 Hex Bolt	2
N/A	M6 x 1.0 Flange Nut	4
N/A	M6 x \varnothing 12.5 mm Flat Washer	6

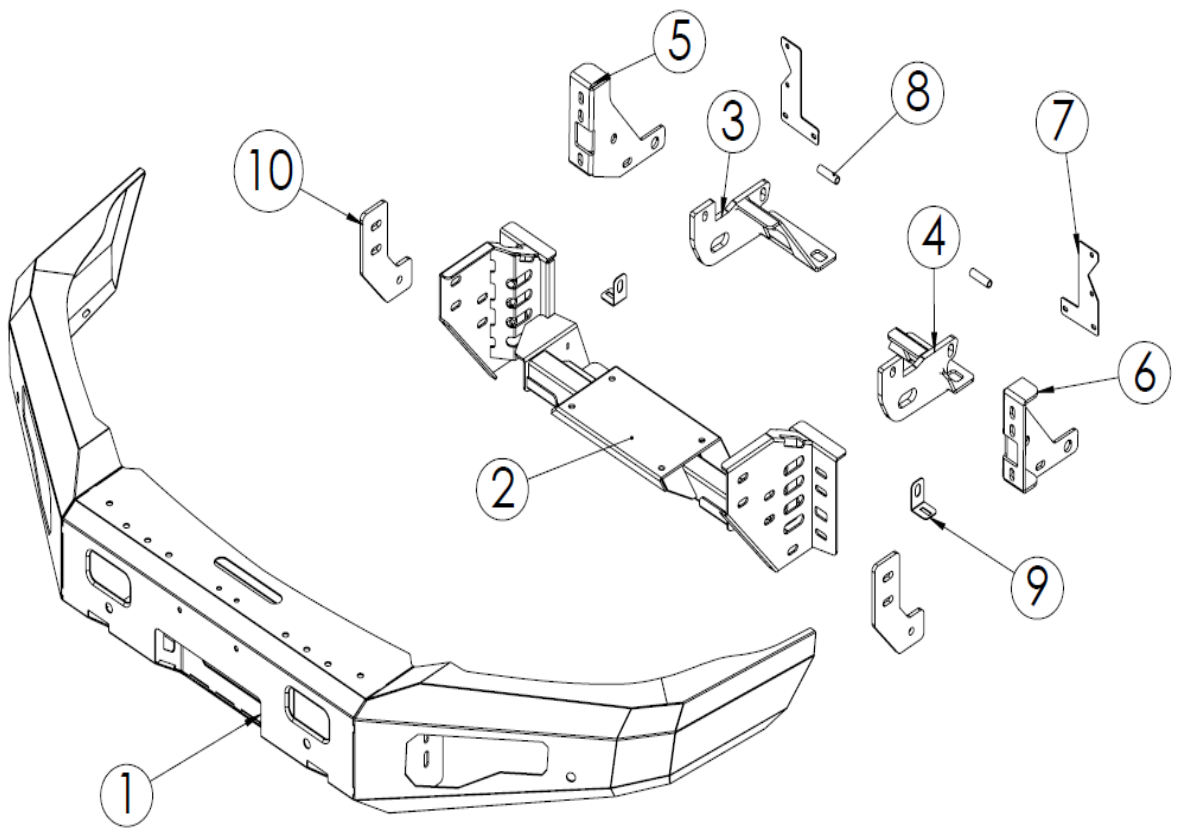
License Plate

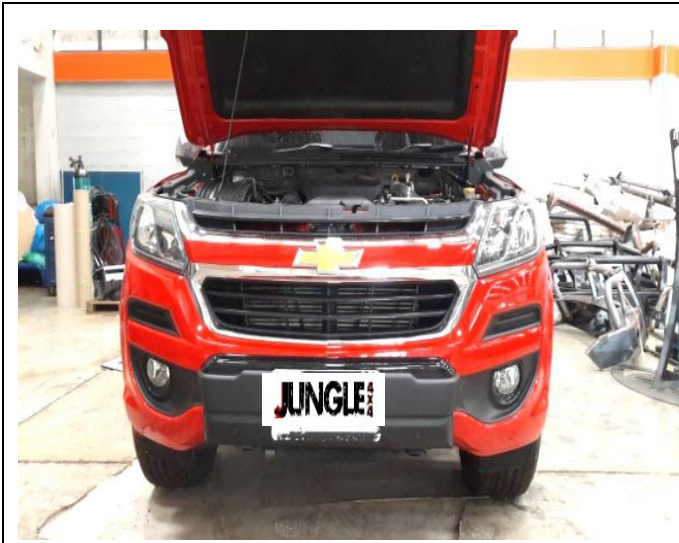


No.	Description	Qty
N/A	M6 x 1.0 x 25 Hex Bolt	4
N/A	M6 x 1.0 Flange Nut	2
N/A	M6 x \varnothing 12.5 mm Flat Washer	6

Bolt Kit

No.	Description	Qty
N/A	Bumper Trim Template RH	1
N/A	Bumper Trim Template LH	1
N/A	M6 x 1.0 x 20 Button Head Bolt	4
N/A	M6 x 1.0 Flange Nut	8
N/A	M6 x \varnothing 19 mm Flat Washer (Black)	8
N/A	M10 x 1.25 x 80 Hex Bolt	4
N/A	M10 x 1.25 x 35 Hex Bolt	16
N/A	M10 x 1.25 Nyloc Nut	12
N/A	M10 x \varnothing 28mm Flat Washer	32
N/A	M10 Spring Washer	8
N/A	M12 x 1.25 x 35 Hex Bolt	4
N/A	M12 x 1.25 x 50 Hex Bolt (15mm Shank)	6
N/A	M12 x 1.25 Nyloc Nut	10
N/A	M12 x \varnothing 32 mm Flat Washer	20
N/A	M10 Square Washer (36x36x3mm)	4
N/A	M12 Square Washer (36x36x4mm)	2





- Check car for damage and report if any.



- Undo indicated (LHS & RHS) Allen screws and remove upper radiator shroud and retain.



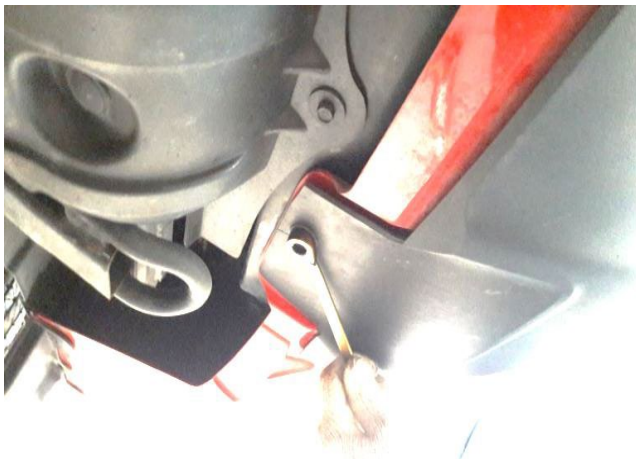
- Undo indicated bolt and remove lower radiator shroud and retain.



- Undo vertical screws in the wheel arch and retain.



- Undo indicated mud flap screws and retain.



- Undo indicated lower bumper bolts and discard.



- Carefully remove the bumper and place it on a smooth surface.



- Frontal view after bumper removal.



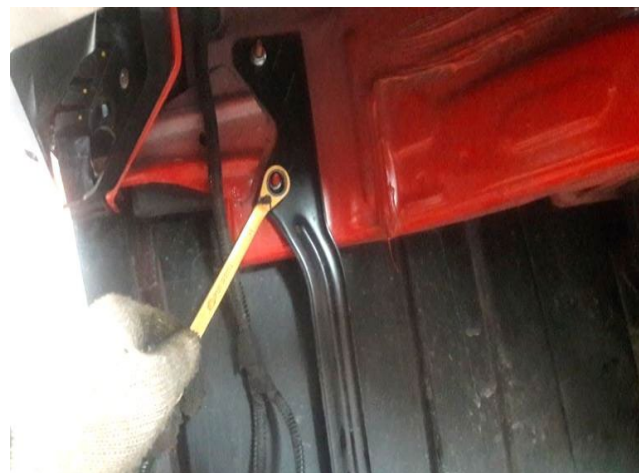
- Undo indicated chassis cross-beam bolt (LHS & RHS) and discard.



- Undo indicated under-body protection bolt and retain both.



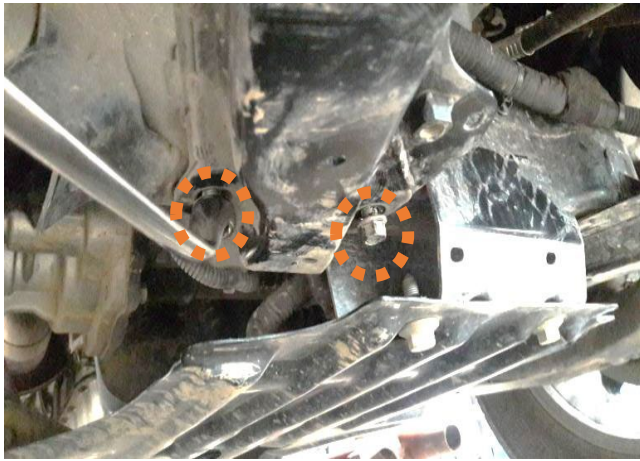
- Remove and discard chassis cross-beam.



- Undo indicated bumper support bracket (LHS & RHS) and discard.



- Undo recovery point bolts and push to create space.



- Undo indicated bolts to space out recovery point frame.



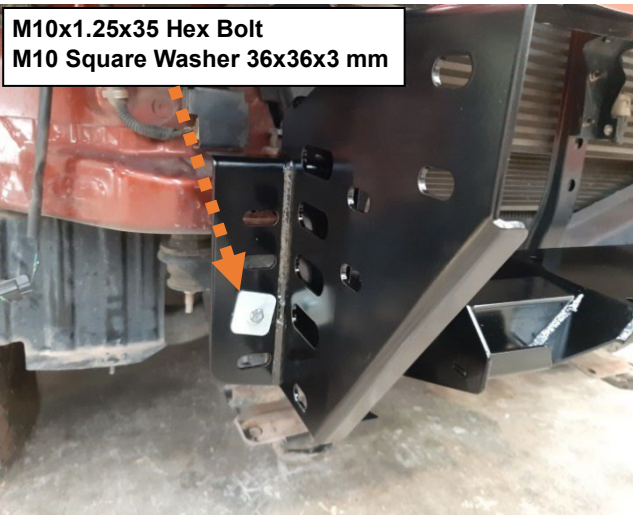
- Using trim template provided with fitting kit, mark along the indicated and make a cut.



- Use a masking tape and mark along the indicated line.
- Use a trim cutting tool to make a cut.

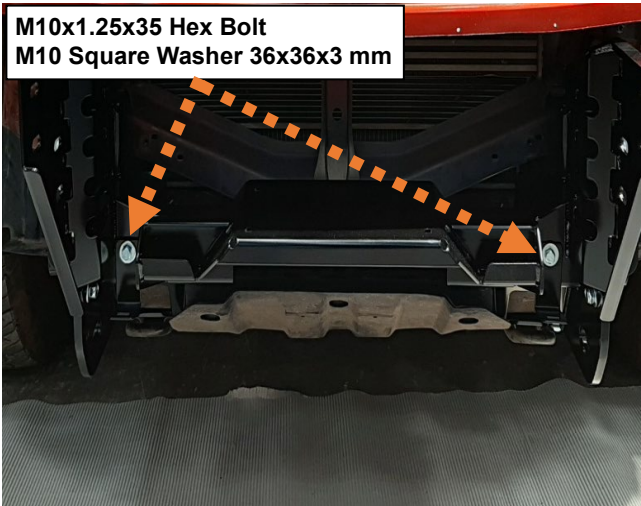


- Frontal view after grill cut.

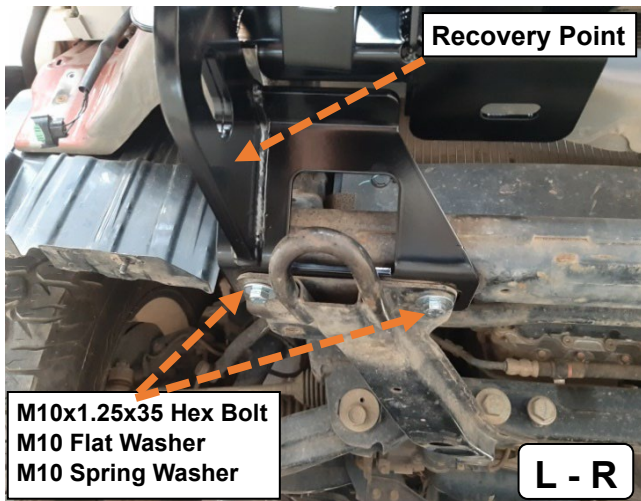


- Mount winch cradle (outer slot) using the supplied bolt kit.

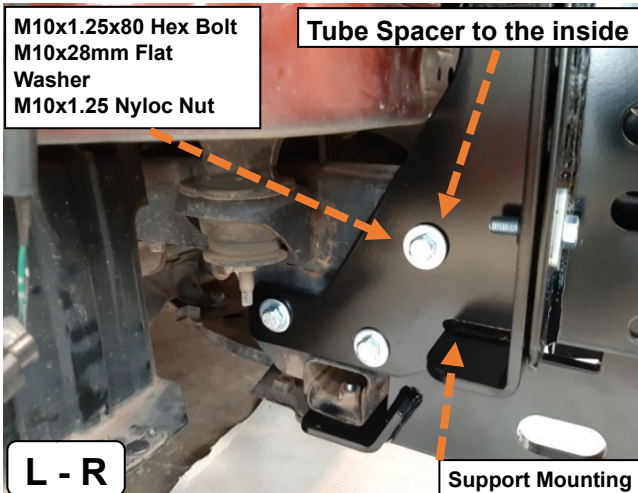
**M10x1.25x35 Hex Bolt
M10 Square Washer 36x36x3 mm**



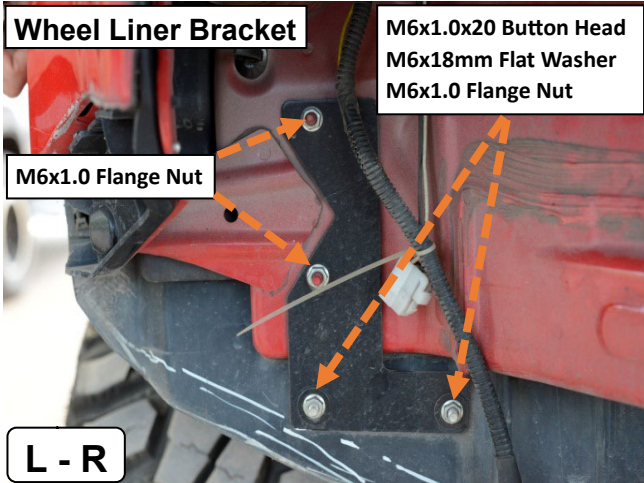
- Mount winch cradle (inner slot) using the supplied bolt kit.



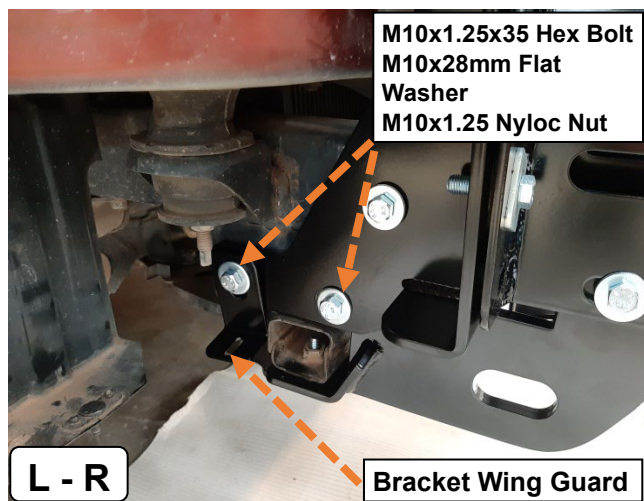
- Insert in the recovery point assembly provided in the fitting kit.



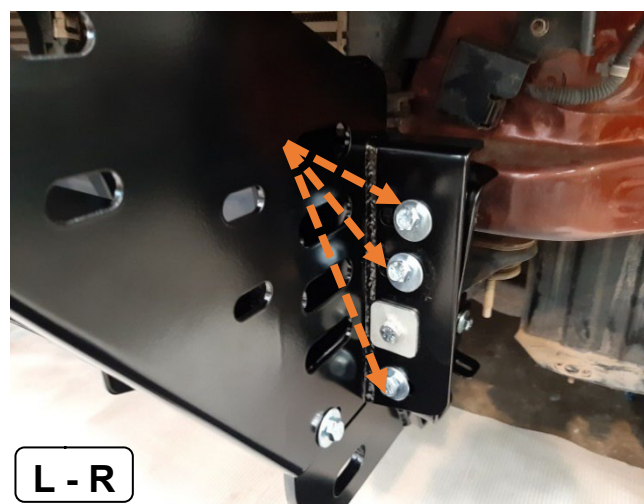
- Install support mounting with the provided bolt kit.



- Install wheel liner bracket provided in the fitting kit.

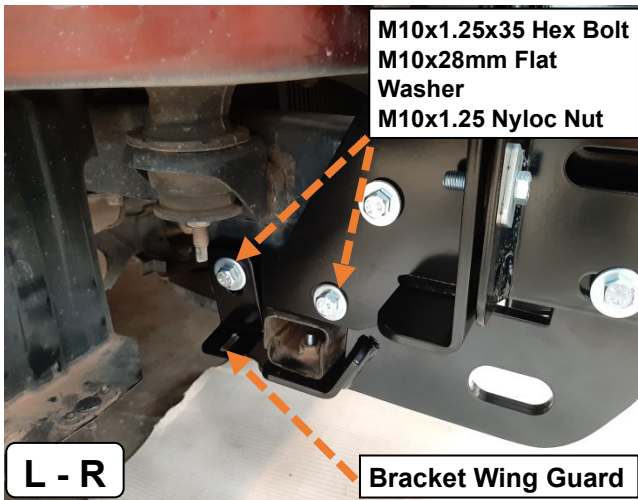


- Install wing guard bracket provided with the fitting kit.

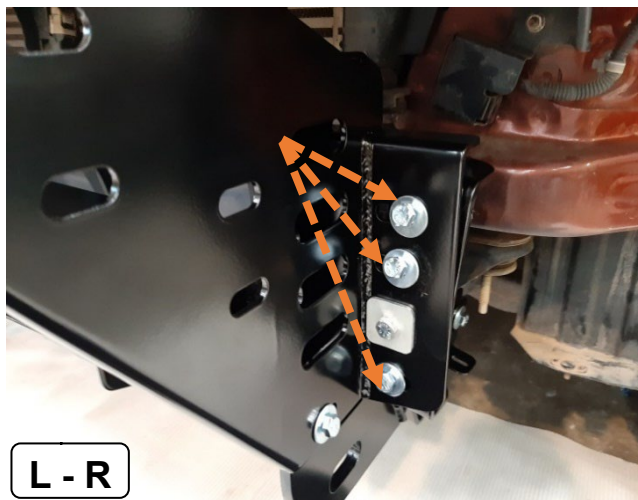


- Install remaining winch cradle bolts.
- Remember to centre the cradle before finalizing it.

- Install wheel liner bracket provided in the fitting kit.



- Install wing guard bracket provided with the fitting kit.



- Install remaining winch cradle bolts.
- Remember to centre the cradle before finalizing it.