

JUNGLE^{4x4}	FITTING INSTRUCTIONS
PRODUCT NAME:	FRONT BULLBAR
MODEL NAME:	DELUXE BAR, SPORTS BAR
CAR MODEL:	TOYOTA HILUX REVO 2020+

NOTE

- This product must be installed as per the instructions given below using the components supplied.
- This product must be used for specified vehicle make and model.
- All product labels should be kept untouched/not tampered with.
- This product must not be modified until otherwise mentioned/suggested.
- Professional installation of this product is recommended and requires professional tools.
- The installer should check for component clearances before finalising the installation of the product.
- Bolts/nuts fastened to specified torque unless otherwise instructed.

Torque settings for fasteners

SIZE	TORQUE (Nm)	TORQUE (lbft)
M5	5	4
M6	9	7
M8	22	16
M10	44	32
M12	77	57


Tools Required

Basic tool kit	Temporary marker pens
Plastic trim cutting tool/blade	Torque wrench
Tape measure	Drill with full metric drill set
Masking tape	18mm solid block

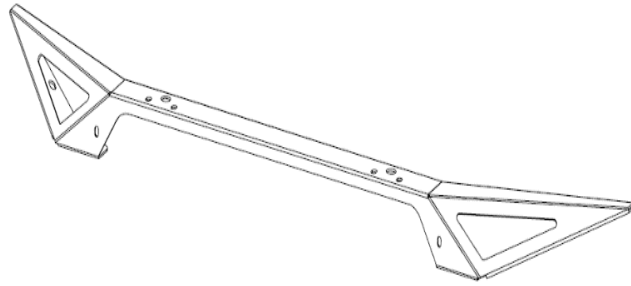


Part List		
No	Description	Qty
1	Bull Bar	1
2	Bar Mount	1
3	Recovery Point RH	1
4	Recovery Point LH	1
5	Mounting Bracket RH	1
6	Mounting Bracket LH	1
7	Tube Spacer \varnothing 17.2mm x 55mm	4
8	Bracket Wing Guard	2
9	Head Light Infill RH	1
10	Head Light Infill LH	1
11	Wheel Liner Bracket RH	1
12	Wheel Liner Bracket LH	1
13	License Plate Bracket	1
N/A	Sensor Plug \varnothing 16 mm (Fit on Bar)	2

Control Winch Plate

		
No	Description	Qty
N/A	M6 x 1.0 x 25 Hex Bolt	2
N/A	M6 x 1.0 Flange Nut	4
N/A	M6 x \varnothing 12.5 mm Flat Washer	6

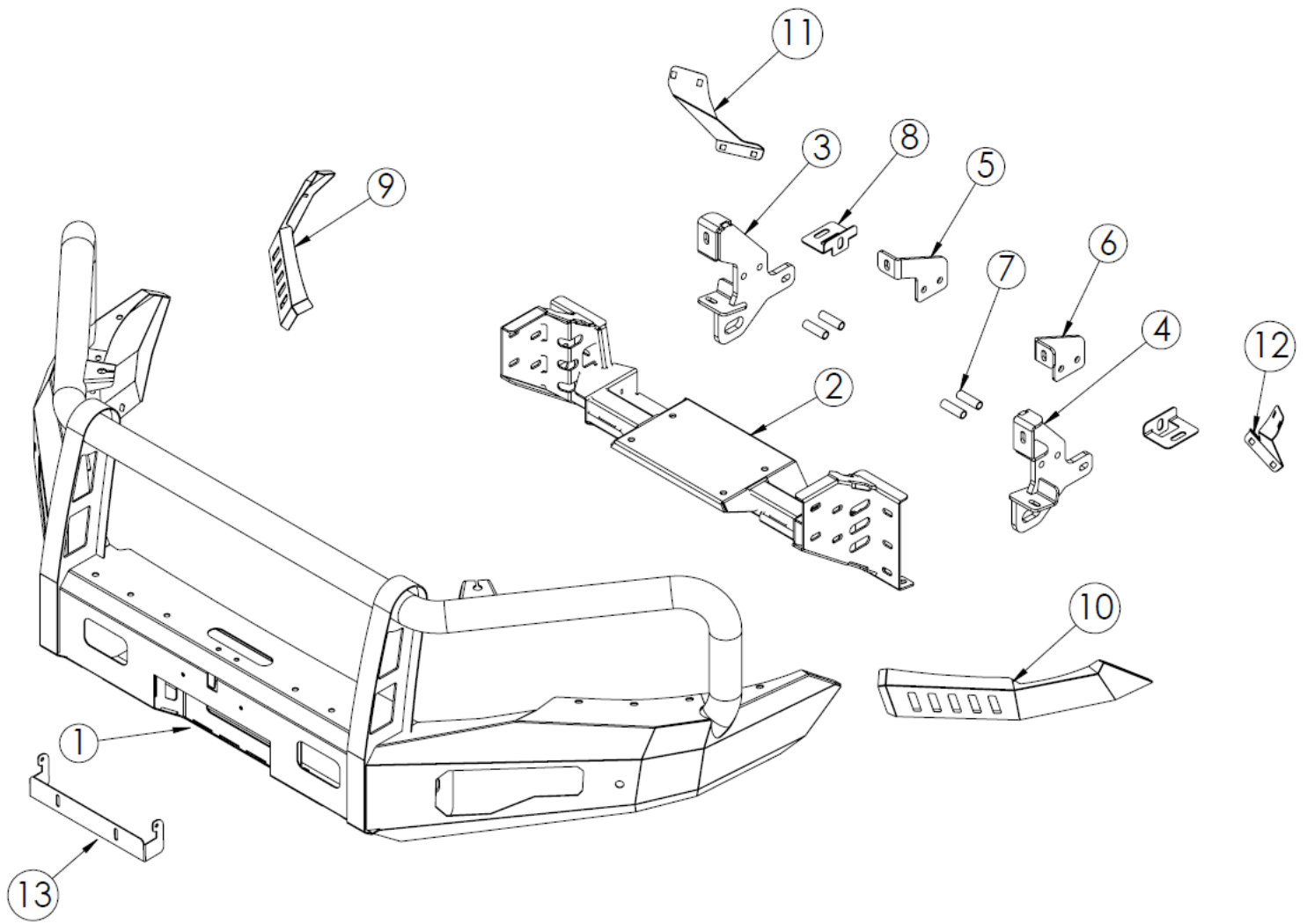
Small Loop (For PJ116 only)



No.	Description	Qty
N/A	M6 x 1.0 x 20 Bottom Head Bolt	4
N/A	M6 x 1.0 Flange Nut	4
N/A	M6 x \varnothing 19mm Flat Washer (Black)	8

Bolt Kit

No.	Description	Qty
N/A	M6 x 1.0 x 20 Bottom Head Bolt	22
N/A	M6 x \varnothing 19 mm Flat Washer	18
N/A	M6 x \varnothing 19mm Flat Washer (Black)	8
N/A	M6 x 1.0 Nyloc Nut	2
N/A	M6 x 1.0 Flange Nut	4
N/A	M6 Cage Nut (1.5-2 mm)	16
N/A	M10 x 1.25 x 35 Hex Bolt	14
N/A	M10 x 1.25 x 90 Hex Bolt	4
N/A	M10 x 1.25 Nyloc Nut	14
N/A	M10 x \varnothing 28mm Flat Washer	32
N/A	M10 Spring Washer	4
N/A	M12 x 1.25 x 35 Hex Bolt	10
N/A	M12 x 1.25 Nyloc Nut	8
N/A	M12 x \varnothing 32mm Flat Washer	18
N/A	M12 Spring Washer	2





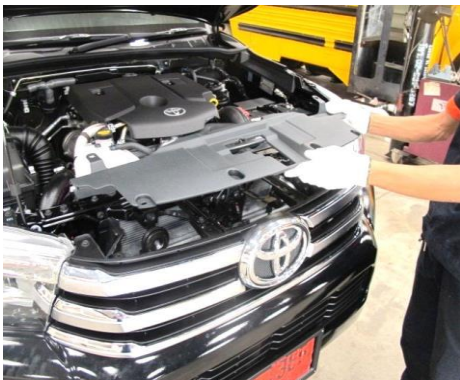
1

- Check car for damages and record if any.



2

- Undo the indicated scrivet and take off the top radiator shroud and retain it.



3



4

- Undo the grill support bolt (as indicated and retain it).
- Gently pull out the grill and place it on a clean surface.



5

- Using a socket wrench, undo the indicated bumper support bolts and retain.
- Make sure to support/hold the bumper.
- Unplug fog lights and any sensors connected.

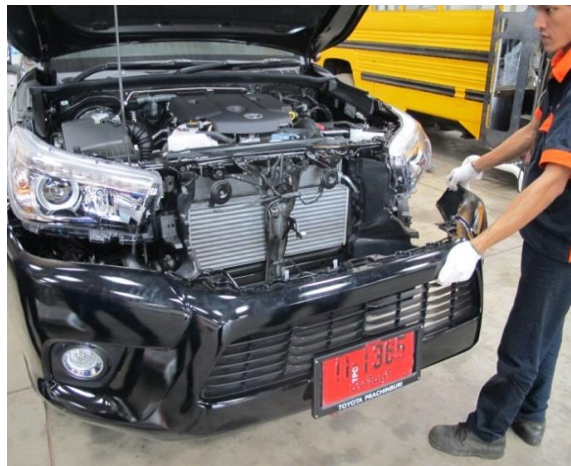


6

- Undo vertical screws in the wheel arch connected fender and bumper and retain.



7



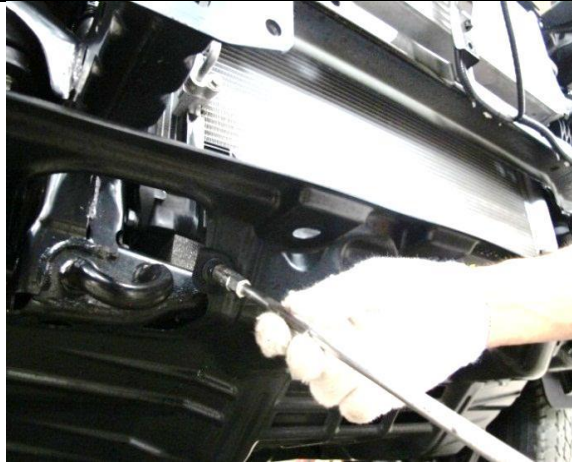
8



9

- Undo the indicated bolt connecting underbody and bumper.
- Carefully take off the bumper and place it on a clean and supported surface.

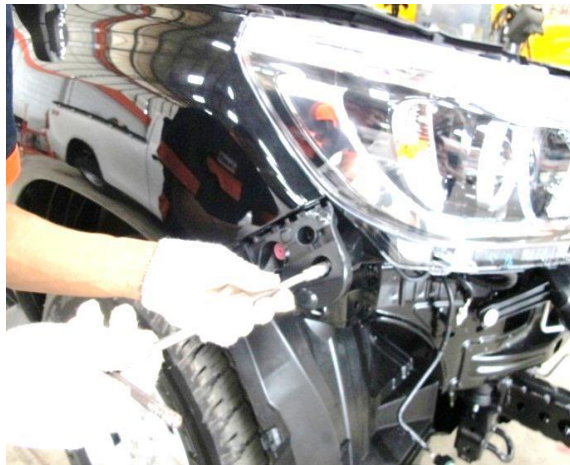
- Undo and discard chassis cross member.



10



11



12

- Undo and discard air dam components.

- Undo and discard bumper support bracket.



13

- Frontal view after component removal.



14

- For models besides “rogue”, make a cut on the grill along the indicated line.



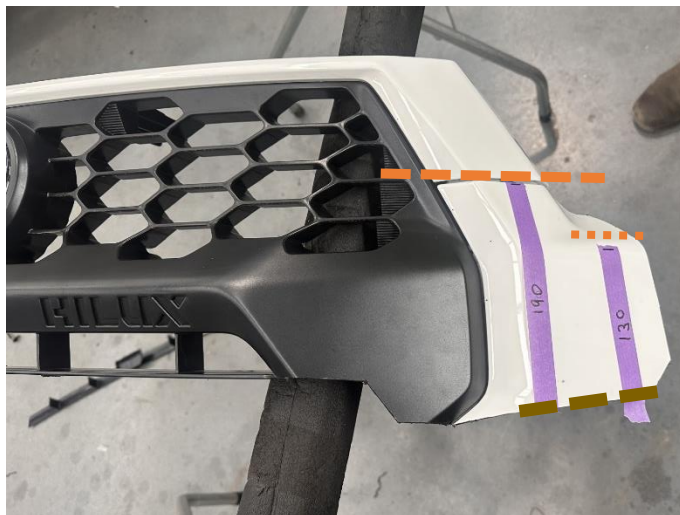
15

- For rogue models, make a cut on the grill along the indicated line.



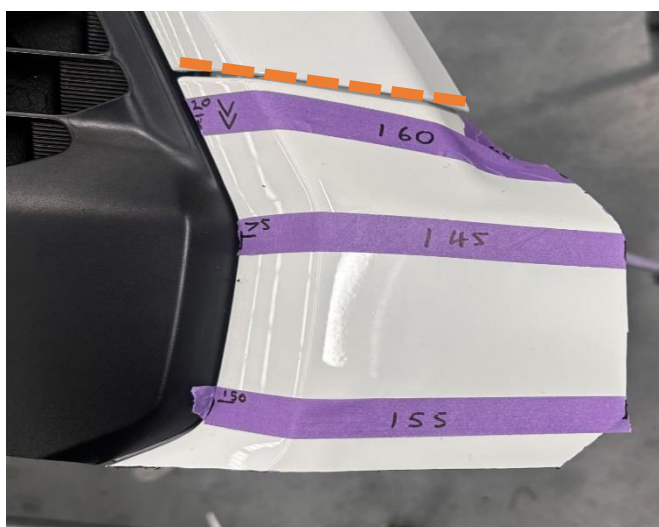
16

- ❑ For N70 models using a masking tape, mark along the indicated line.



17

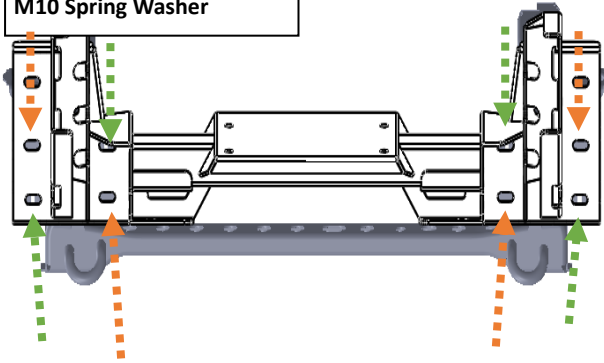
- ❑ Measure 190 mm and 130 mm from the baseline (in brown) and mark it using a masking tape.



18

- ❑ At 20 mm from ref. line measure 160 mm horizontally and mark it using a masking tape.
- ❑ At 75 mm from ref. line measure 145 mm horizontally and mark it using a masking tape.
- ❑ At 150 mm from ref. line measure 155 mm horizontally and mark it using a masking tape.

M10x1.25x35 Hex Bolt
 M10 x ø28mm Flat Washer
 M10 Spring Washer

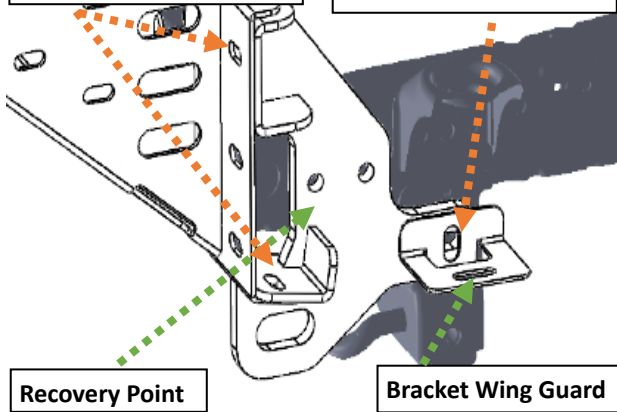


19

- Mount cradle at indicated slots to the chassis using the provided bolt kit.

M10x1.25x35 Hex Bolt
 M10x1.25 Nyloc Nut
 M10 x ø28mm Flat Washer

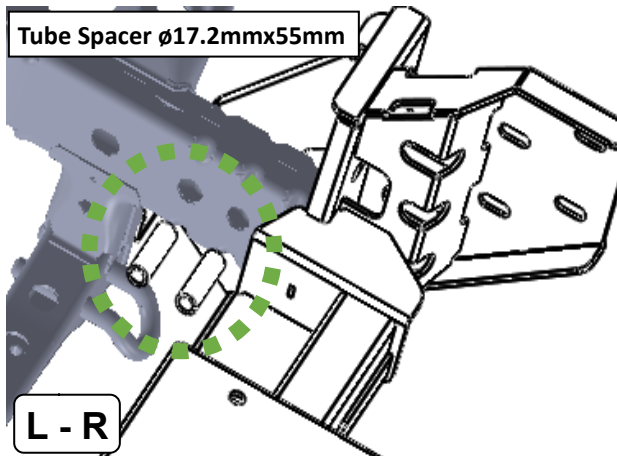
M12x1.25x35 Hex Bolt
 M12xø32mm Flat Washer
 M12 Spring Washer



20

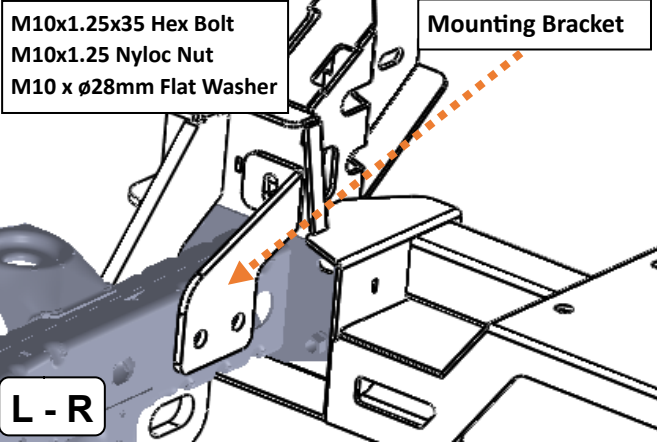
- Install bracket for wing guards and recovery point (LHS & RHS).

Tube Spacer ø17.2mmx55mm

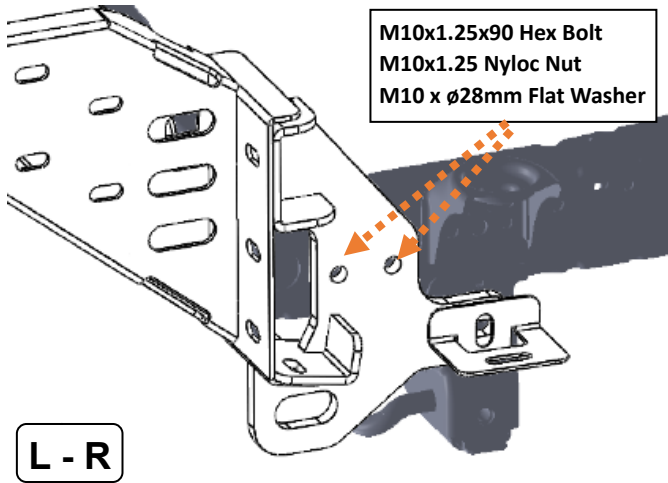


21

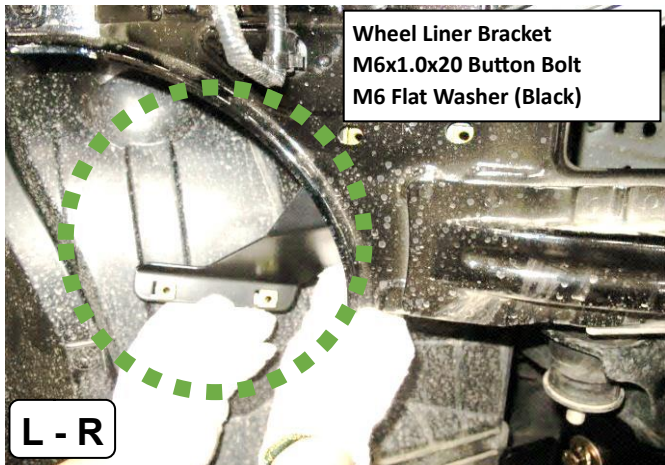
- Insert tube spacers at the indicated location to mount the cradle on the longitudinal face.



22



23

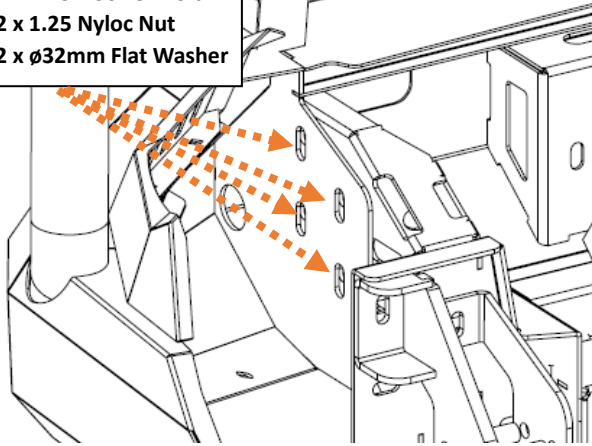


24

Mount indicated using the provided bolt kit.

Install Wheel liner bracket provided in the fitting kit.

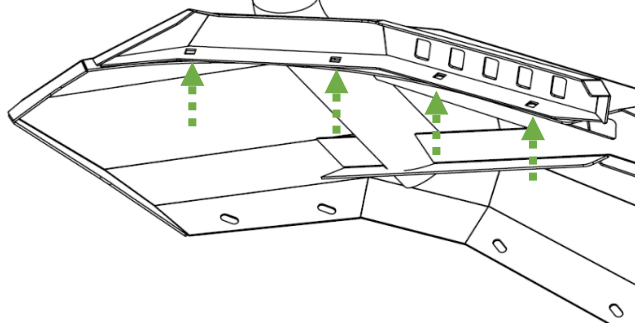
M12 x 1.25 x 30 Hex Bolt
M12 x 1.25 Nyloc Nut
M12 x ø32mm Flat Washer



25

- Install bulbar and wing infill using the bolts provided in the bolt kit.

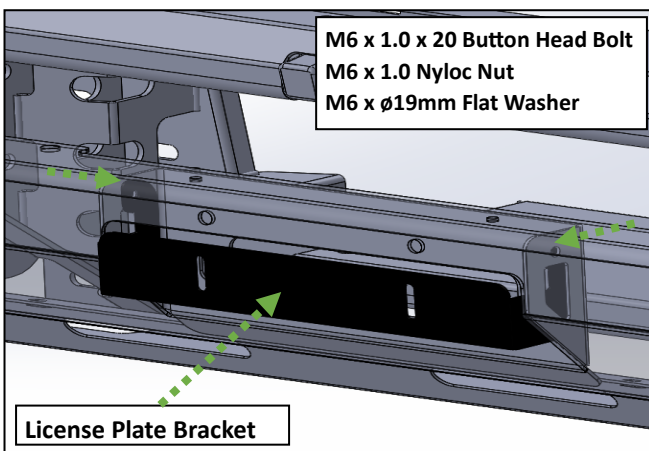
M6x1.0x20 Button Head Bolt
M6x19mm Flat Washer
M6 x 1.0 Cage



26

- Mount license plate bracket.

M6 x 1.0 x 20 Button Head Bolt
M6 x 1.0 Nyloc Nut
M6 x ø19mm Flat Washer



26

Disclaimer:

- For optimal fitting there should be an 18 mm gap between the bullbar and fender and parallel to the fender line.
- Further fitment is at the installer's own discretion.